

Attenuator Type-sD

ATTENUATOR

Low contact resistance

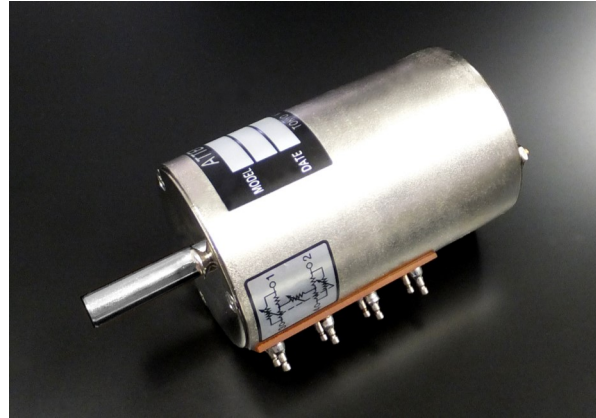
Au-plated contact materials.

Low-profile type

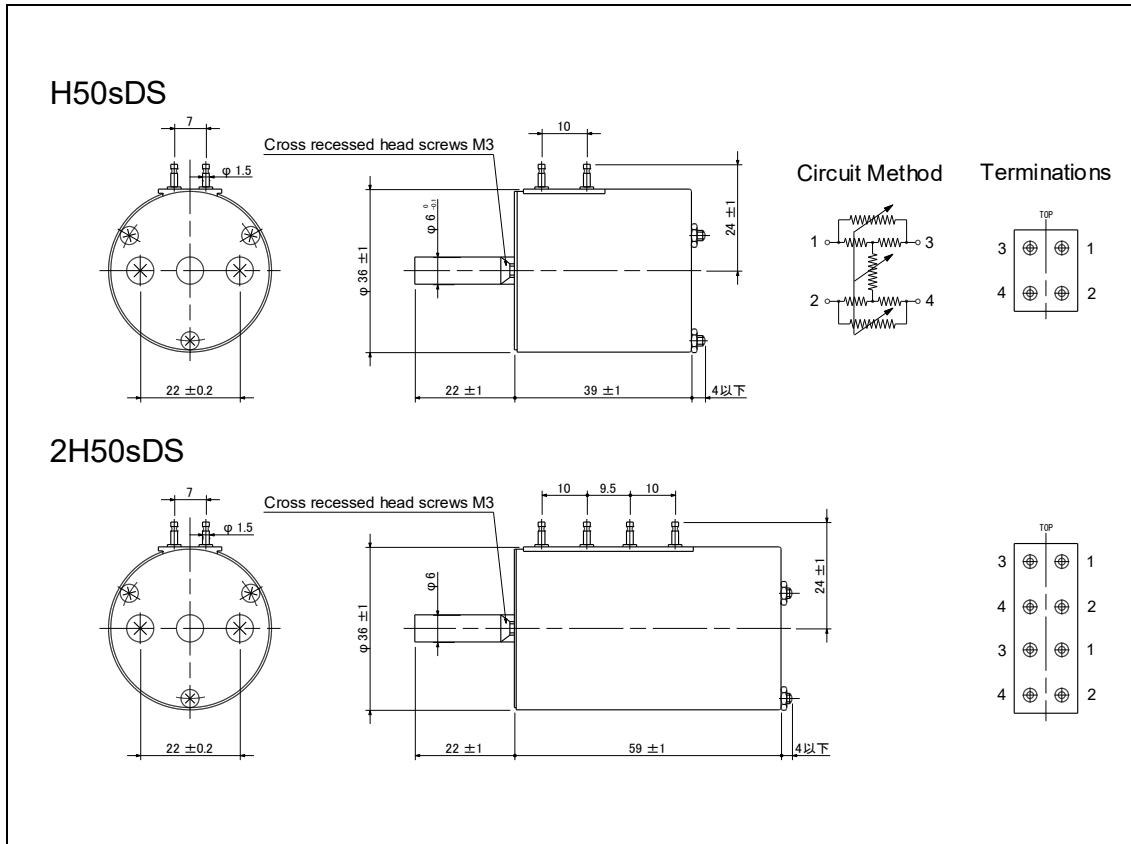
Shorter than conventional products.

High Accuracy

Used a highly precise resistor.



Dimensions



Model number

2 **H** **50** **sD** **S** - **600ohm**
 Number of circuit Circuit Max attenuation Product type With clicks Impedance
Blank: Single circuits **H**: Bridged-H
2: 2 circuits

Electrical specifications

H50sDS / 2H50sDS	
Attenuation	BTS-50dB [0, 2, 4, ... (2dB step) ..., 30, 32, 34, 37, 42, 50, cut off]
Attenuation accuracy	Attenuation step
	Error in step
	Max. Attenuation
Accuracy of Impedance	600ohm ±2%
Cut off (15kHz)	80dB or more
Voltage proof	1 Min. at AC500V
Insulation resistance	100Mohm or more at DC500V
Input level	Max. 0.3W
Rotational life	30,000 Cycles Min. (18cycles/min, Insertion loss: 1dB or less)

Mechanical specifications

H50sDS / 2H50sDS	
Operating angle	315 degrees ± 2degrees
Strength of Nut-Attached	100Ncm
Attached Parts	M3 screw (Length: Panel thickness + 3~5mm)
Stopper strength	50Ncm
Push-pull strength	50N

General specifications

H50sDS / 2H50sDS	
Temp.range	-10 to +60 degrees C (Operating), -15 to +65 degrees C (Storage)
Relative humidity	80%RH (No condensation)

Note

- * Solder heat resistance: 350degrees C max, 5sec max, to twice. (Manual soldering only)
- * The solder please use the thing of the same composition. (Solder for wire lapping sticks to a terminal.)
Use solder: SN100C (Sn-0.7Cu-0.05Ni-Ge) NIHON SUPERIOR CO.,LTD.
- * Cannot use this product for the signal line using phontom-48V.
- * This product is an attenuator of the types to change resistance. Therefore, a switching noise may occur.