

Attenuator Type-SR

ATTENUATOR

Low contact resistance

Silver alloy contact materials.

Balanced Circuit Type

Bridged-H circuit is included.

Type-SR

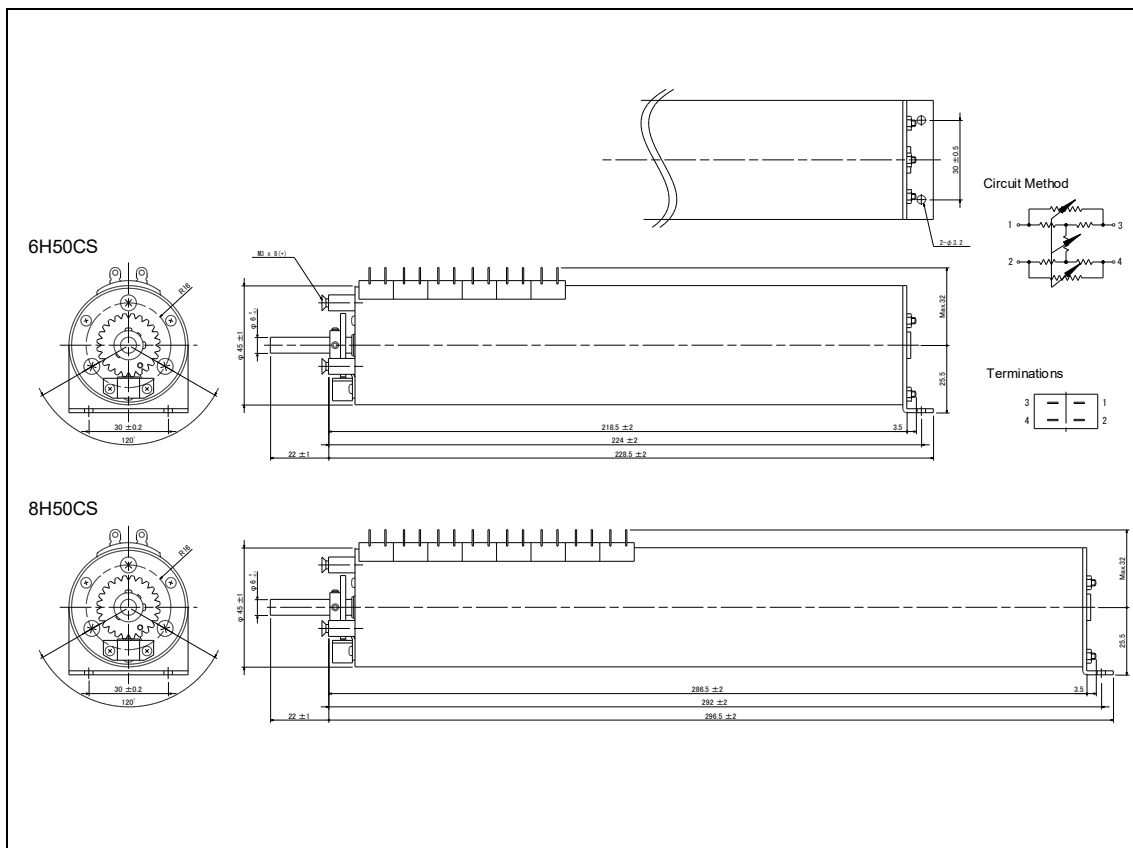
Many interlocking movements type.



Model number

6 **H** **50** **C** **S** = **600ohm**
 Number of circuit Circuit Max attenuation Product type With clicks Impedance
 6: 6 circuits H: Bridged-H
 8: 8 circuits

Dimensions



Electrical specifications

Type-SR	
Attenuation	BTS-50dB [0, 2, 4, ... (2dB step)..., 30, 32, 34, 37, 42, 50, cut off]
Attenuation accuracy	Attenuation step
	Error in step
	Max. Attenuation
Accuracy of Impedance	600ohm ±2%
Cut off (15kHz)	80dB or more
Voltage proof	1 Min. at AC500V
Insulation resistance	100Mohm or more at DC500V
Input level	Max. 0.3W
Rotational life	30,000 Cycles Min. (18cycles/min, Insertion loss: 1dB or less)

Mechanical specifications

Type-SR	
Operating angle	(Step angle) x (Number of steps) ±2degrees
Strength of Nut-Attached	100Ncm
Attached Parts	M3 screw (Length: Panel thickness + 3~5mm) Rear pick up plate: M3 screw (Please be prepared.)
Stopper strength	50Ncm
Push-pull strength	50N

General specifications

Type-SR	
Temp.range	-10 to +60 degrees C (Operating), -15 to +65 degrees C (Storage)
Relative humidity	80%RH (No condensation)

Note

* Solder heat resistance: 350degrees C max, 5sec max, to twice. (Manual soldering only)
 * The solder please use the thing of the same composition. (Solder for wire lapping sticks to a terminal.)
 Use solder: SN100C (Sn-0.7Cu-0.05Ni-Ge) NIHON SUPERIOR CO.,LTD.

* Cannot use this product for the signal line using phontom-48V.
 * This product is an attenuator of the types to change resistance. Therefore, a switching noise may occur.

